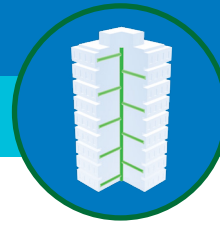


PRODUCT SOLUTIONS BRIEF
BELDEN

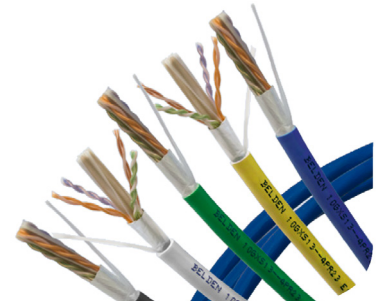
COMMERCIAL BUILDING NETWORK PERFORMANCE



Through our strong global partnerships and alliances with manufacturers such as Belden, we are able to present you with the following offering to meet your specific commercial building requirements.

10GXS Small Diameter Cat 6A Cables

Belden's 10GXS series of small diameter Cat 6A cables has the world's smallest outside diameter (OD) that can support 10Gbps transmission. The smaller diameter can save an IT manager up to 25% on space and weight versus traditional Cat 6A cables. The series covers all cabling designs from UTP to shielded, bonded pair and, non-bonded pair, as well as CMR, CMP and LSZH jacket types and many different colour variations. For more than 20 years, customers have relied Belden's patented bonded-pair technology to maintain physical integrity throughout the installation and use. Maximise your installable performance with bonded-pair 10GXS cables.



Belden's 10GXS cables provide a simple design without compromising performance and quality, delivering robust performance and reliable networks.

CHALLENGE SOLVERS

- Prevent high external temperatures
 - EquiBlock™ Barrier Technology improves heat transfer and achieves uniform heat flow dissipation to eliminate hotspots in cable bundles
 - Maintains low insertion loss at elevated temperatures to reduce length de-rating for improved PoE performance
- Optimise electrical performance
 - Patented EquiSpline™ Design maintains equal distance between pairs and outer barrier along the cable to prevent noise coupling
 - Retains more air space around individual pairs for better electrical performance
- Maximise available space
 - Smaller diameter cable saves up to 25% on space and weight
 - Smaller bend radius accommodates tighter spaces and workstations

THE ANIXTER APPROACH

- **Network Flexibility**
Apply open architecture designs to accommodate your performance requirements for a highly scalable network.
- **Media Selection**
Choose the appropriate physical media from twisted-pair, optical fibre and direct-attach cables to address high-speed bandwidth requirements.
- **Universal Cabling Topology**
Determine the right choice for an open architecture environment by adopting commercial building wiring and building automation standards.
- **Application Support**
Deploy scalable designs that can support multiple and varied applications over a high-performance, IP-based structured cabling system.

THE BELDEN SOLUTION

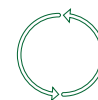
SWITCH OPTIONS	CONDUCTOR PAIR	PACKAGING
Plenum-CMP Riser-CMR LSZH	Bonded Nonbonded	Spool Reel-in-Box

anixter.com/shopbelden/apac



WHAT WE HEAR

Challenges from the various commercial building stakeholders are:



Keeping up with **EVOLVING TECHNOLOGIES**



AMORTISATION of cabling systems



Supporting multiple **APPLICATIONS**



Reducing network **DOWNTIME**



Coping with **INCREASING BANDWIDTH**

Infrastructure as a Platform
by Anixter

Infrastructure as a Platform by Anixter offers a standards-based, physical layer approach that provides a foundation to meet the high-performance demands of your commercial building.

CONFIGURE

We help you discover and map your specific needs to the best solution.

- Required fire rating
- Conductor durability needs
- Length requirements
- Colour choice

BUNDLE

Your validated, preconfigured solutions are packaged and site ready.

- REVConnect
- KeyConnect outlets
- KeyConnect panels
- Racks and enclosures

DEPLOY

Controlled, repeatable solutions are delivered on time and under budget.

- Custom packaging and labelling
- Time-sensitive delivery options
- Staged project shipping
- Tailored last-mile delivery

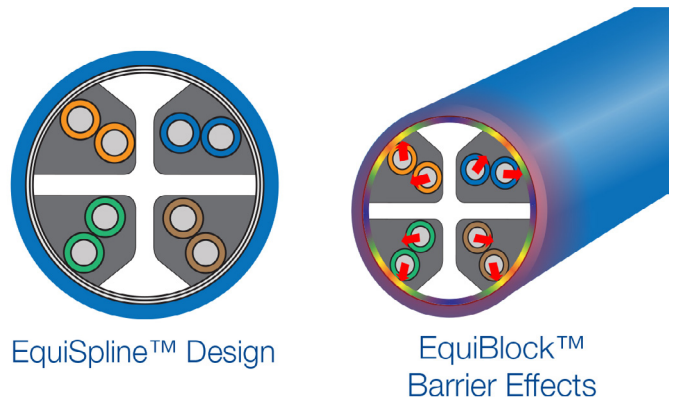
BELDEN 10GXS SMALL DIAMETER CAT 6A CABLE FEATURES

✓ KEEP UP WITH EVOLVING TECHNOLOGIES

- 100W PoE ready
- Compatible with Belden's REVConnect connectivity system
- UTP and F/UTP constructions available in all cable categories

✓ REDUCE NETWORK DOWNTIME

- Better data transmission pathway results in a lower number of packet resends
- 200% less noise coupling when compared with other Cat 6A solutions
- Optimises balance and consistent cable geometry for reduced bit error rates



10GXS cables offer performance without compromise by exceeding industry standards.

> FOR MORE DETAILS VISIT ANIXTER.COM/SHOPBELDEN/APAC

About Anixter: anixter.com/aboutus
Legal Statement: anixter.com/legalstatement

At Anixter, we enable the connected world. By building, connecting, protecting and powering valuable assets and critical infrastructures, we help to sustain and grow businesses and communities worldwide. We accomplish this by offering full-line solutions, technical intelligence, supply chain expertise and an unmatched global distribution network.

anixter.com/asiapacific

