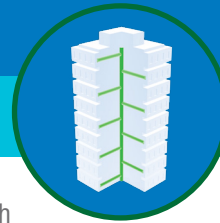


PRODUCT SOLUTIONS BRIEF
COMMSCOPE

COMMERCIAL BUILDING NETWORK PERFORMANCE



Through our strong global partnerships and alliances with manufacturers such as CommScope, we are able to present you with the following offering to meet your specific commercial building requirements.

Powered Fibre Cable System

CommScope's Powered Fibre Cable System (PFCS) is a complete rack-to-device solution for powering and communicating with HD cameras, Wi-Fi hotspots, small cells and various network devices. When coupled with Power over Ethernet (PoE) extenders, PFCS solves power and communications challenges including primary, secondary and tertiary electrical protection as well as managing power by automatically correcting for voltage drop over distance.

CHALLENGE SOLVERS

- Eliminating the DC electrical calculations for voltage and power drop over varying distances speeds up planning.
- Up to 32 devices can run simultaneously on one power supply.
- Carrier-grade electrical protection assures reliability.
- The system allows for placing devices exactly where they are needed to maximise coverage.

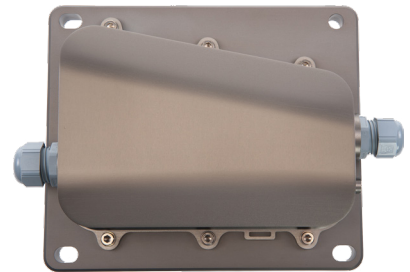
THE ANIXTER APPROACH

- **Network Flexibility**
Apply open architecture designs to accommodate your performance requirements for a highly scalable network.
- **Universal Cabling Topology**
Determine the right choice for an open architecture environment by adopting commercial building wiring and building automation standards.
- **Media Selection**
Choose the appropriate physical media from twisted pair, optical fibre and direct-attached cables to address high-speed bandwidth requirements.
- **Wireless Mobility**
Determine your migration path for Wi-Fi and in-building cellular connectivity to support a multi-screen environment.
- **Application Support**
Deploy scalable designs that can support multiple and varied applications over a high-performance, IP-based structured cabling system.

THE COMMSCOPE SOLUTION

CABLE TYPE	WIRE GAUGE	OPTIONS
Indoor Outdoor	12 AWG 16 AWG Multimode Single mode	Hybrid cable PoE extender Cable and fibre management

anixter.com/shopcommscope/apac



PoE extender and mounting plate

COMMSCOPE®

WHAT WE HEAR

Challenges from the various commercial building stakeholders are:



Keeping up with **EVOLVING TECHNOLOGIES**



AMORTISATION of cabling systems



Supporting multiple **APPLICATIONS**



Reducing network **DOWNTIME**



Coping with **INCREASING BANDWIDTH**

Infrastructure as a Platform
by Anixter

Infrastructure as a Platform by Anixter offers a standards-based, physical layer approach that provides a foundation to meet the high-performance demands of your commercial building.

CONFIGURE

We help you discover and map your specific needs to the best solution.

- Fibre type
- PoE extender
- Power management system
- Fibre and fibre/cable management

BUNDLE

Your validated, preconfigured solutions are packaged and site ready.

- HD cameras
- Wi-Fi access points
- Small Cells
- UPS solutions

DEPLOY

Controlled, repeatable solutions are delivered on time and under budget.

- Custom packaging and labelling
- Time-sensitive delivery options
- Staged project shipping
- Tailored last-mile delivery

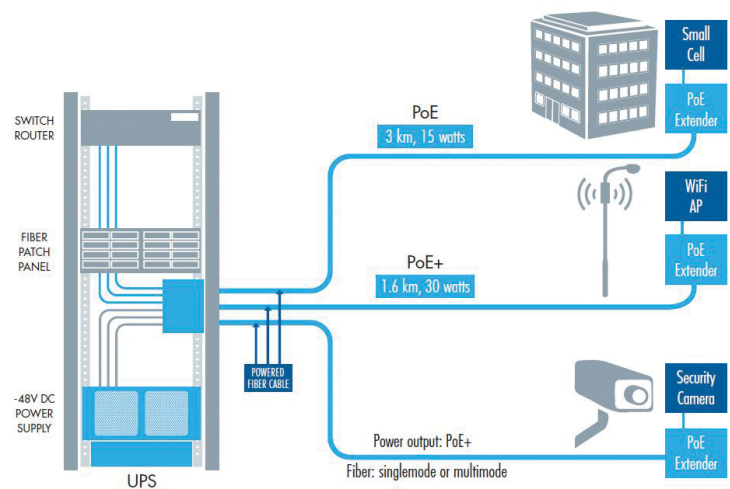
COMMSCOPE PFCS FEATURES

✓ JUSTIFY THE COST OF EFFICIENCY

- Reduces landlord and utility negotiations
- Eliminates local power sources
- Greatly speeds up planning by eliminating DC electrical calculations for voltage/power drop over varying distances
- Features “easy peel” cable access that allows cables to be accessed much faster than traditional hybrid cables

✓ MIGRATE TO AN IP PLATFORM

- Runs 30 times the distance of PoE
- Handles up to 32 devices simultaneously from one power supply
- Allows for placing devices exactly where they are needed to maximise coverage
- Features PoE extenders that can power and communicate with any PoE+ device



PFCS configuration diagram

> FOR MORE DETAILS VISIT [ANIXTER.COM/SHOPCOMMSCOPE/APAC](https://www.anixter.com/shopcommscope/apac)

About Anixter: [anixter.com/aboutus](https://www.anixter.com/aboutus)
Legal Statement: [anixter.com/legalstatement](https://www.anixter.com/legalstatement)

At Anixter, we enable the connected world. By building, connecting, protecting and powering valuable assets and critical infrastructures, we help to sustain and grow businesses and communities worldwide. We accomplish this by offering full-line solutions, technical intelligence, supply chain expertise and an unmatched global distribution network.

[anixter.com/asiapacific](https://www.anixter.com/asiapacific)

