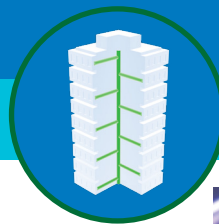


PRODUCT SOLUTIONS BRIEF  
**COMMSCOPE**

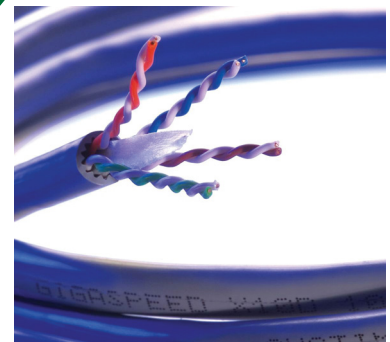
**COMMERCIAL BUILDING NETWORK PERFORMANCE**



Through our strong global partnerships and alliances with manufacturers such as CommScope, we are able to present you with the following offering to meet your specific commercial building requirements.

**SYSTIMAX® GigaSPEED™ X10D**

CommScope's SYSTIMAX GigaSPEED X10D Solution provides 10G Ethernet performance for improved bandwidth, data throughput and network efficiency. The cable features a reduced diameter that optimises transmission performance, which gives network managers increased rack space and airflow without introducing alien crosstalk. Easy to install and backward compatible with 1G switches, GigaSPEED X10D provides the additional bandwidth customers need for future applications including IEEE 802.3ac Wi-Fi.



GigaSPEED X10D cable provides 10G Ethernet performance.

**CHALLENGE SOLVERS**

- GigaSPEED X10D provides unprecedented performance for key parameters, such as insertion loss and all forms of crosstalk, both within and between channels, yielding improved bandwidth, data throughput and network efficiency.
- The Optimised Material Technology (OMT) platform reduces cable diameter while optimising transmission performance.
- Four-pair construction with finned inner jacket surface and isolator member provides the extra margin of performance required for high-bandwidth applications.
- It qualifies for the SYSTIMAX 20-Year Extended Product Warranty and Applications Assurance when included as part of a registered SYSTIMAX GigaSPEED X10D channel.

**THE ANIXTER APPROACH**

- **Network Flexibility**  
Apply open architecture designs to accommodate your performance requirements for a highly scalable network.
- **Universal Cabling Topology**  
Determine the right choice for an open architecture environment by adopting commercial building wiring and building automation standards.
- **Media Selection**  
Choose the appropriate physical media from twisted pair, optical fibre and direct-attached cables to address high-speed bandwidth requirements.
- **Application Support**  
Deploy scalable designs that can support multiple and varied applications over a high-performance, IP-based structured cabling system.

**THE COMMSCOPE SOLUTION**

CABLING	BROADCAST SUPPORT	IBW SOLUTIONS
Plenum Nonplenum Low smoke zero halogen	MGS600 VisiPatch PATCHMAX® Evolve	DAS SC (small cell)

[anixter.com/shopcommscope/apac](http://anixter.com/shopcommscope/apac)

**COMMSCOPE®**

**WHAT WE HEAR**

Challenges from the various commercial building stakeholders are:



Keeping up with **EVOLVING TECHNOLOGIES**



**AMORTISATION** of cabling systems



Supporting multiple **APPLICATIONS**



Reducing network **DOWNTIME**



Coping with **INCREASING BANDWIDTH**

**Infrastructure as a Platform**  
by Anixter

Infrastructure as a Platform by Anixter offers a standards-based, physical layer approach that provides a foundation to meet the high-performance demands of your commercial building.

## CONFIGURE

We help you discover and map your specific needs to the best solution.

- Cable type
- Information outlets
- Panel type
- Automated infrastructure management

## BUNDLE

Your validated, preconfigured solutions are packaged and site ready.

- SYSTIMAX outlets
- SYSTIMAX patch cords
- SYSTIMAX patch panels
- Racks and cabinets

## DEPLOY

Controlled, repeatable solutions are delivered on time and under budget.

- Custom packaging and labelling
- Time-sensitive delivery options
- Staged project shipping
- Tailored last-mile delivery

## COMMSCOPE SYSTIMAX GIGASPEED X10D FEATURES

### ✓ KEEP UP WITH EVOLVING TECHNOLOGIES

- This solution delivers next generation support by providing bandwidth that is extended out to 500 MHz with guaranteed alien crosstalk performance.
- Electrical performance is guaranteed to meet or exceed the channel specifications of ISO/IEC 11081:2001, with ISO/IEC 11801 to ISO/IEC 11 80:2001 Class E<sub>A</sub>, and ANSI/TIA-568-C.2 Category 6A up to 500 MHz.
- Alien crosstalk complies to industry standards ANSI/TIA-568-C and ISO/IEC 11801.
- Single-jacket cables are constructed for optimum size and improved handling.

### ✓ COPE WITH INCREASING BANDWIDTH

- This system is specifically engineered with enhanced cable and connector performance to support 10 Gbps Ethernet requirements.
- Plenum, nonplenum and low-smoke zero-halogen (LSZH) versions are available.



imVision controller showing circuit trace

**> FOR MORE DETAILS VISIT [ANIXTER.COM/SHOPCOMMSCOPE/APAC](http://ANIXTER.COM/SHOPCOMMSCOPE/APAC)**

**About Anixter:** [anixter.com/aboutus](http://anixter.com/aboutus)

**Legal Statement:** [anixter.com/legalstatement](http://anixter.com/legalstatement)

At Anixter, we enable the connected world. By building, connecting, protecting and powering valuable assets and critical infrastructures, we help to sustain and grow businesses and communities worldwide. We accomplish this by offering full-line solutions, technical intelligence, supply chain expertise and an unmatched global distribution network.

[anixter.com/asiapacific](http://anixter.com/asiapacific)

