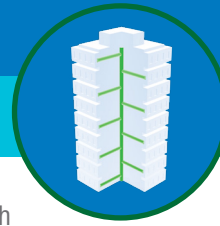


PRODUCT SOLUTIONS BRIEF  
**CORNING**

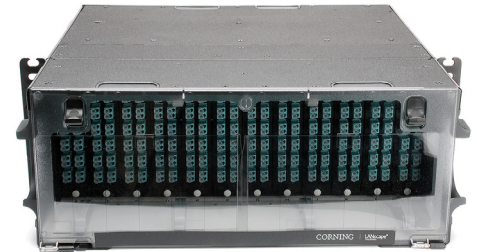
**COMMERCIAL BUILDING NETWORK PERFORMANCE**



Through our strong global partnerships and alliances with manufacturers such as Corning, we are able to present you with the following offering to meet your specific commercial building requirements.

**Closet Connector Housing**

Corning's Closet Connector Housings (CCH) provide interconnect or cross-connect capabilities between outside plant, riser or distribution cables and optoelectronics. Like other LANscape solutions hardware, the housings accept CCH connector panels, cassettes and modules. Every CCH housing is shipped complete with strain relief brackets, routing clips and guides and mounting brackets. The internal and external strain-relief options ensure flexibility for installation and all moves, adds and changes (MACs).



Corning CCH reduces the risk of error that can disrupt networks.

**CHALLENGE SOLVERS**

- From fibre and cable routing and strain relief, to port labelling and termination, these housings reduce the risk of error that can disrupt networks.
- All Closet Connector Housings can be upgraded for pigtail splicing to full fibre capacity and easy, modular fibre management through the use of CCH Splice Cassettes (CCH-CS).
- CCH cassettes are preloaded and prerouted for quick fusion splicing of either individual or ribbon fibre pigtails, which allows faster field splicing and easy modular management of connectorisation within the housing.
- CCH accepts panels, modules and cassettes, which provides a variety of field-termination options.

**THE ANIXTER APPROACH**

Versatile Physical Layer Connectivity

- **Network Flexibility**  
Apply open architecture designs to accommodate your performance requirements for a highly scalable network.
- **Application Support**  
Deploy scalable designs that can support multiple and varied applications over a high-performance, IP-based structured cabling system.
- **Universal Cabling Topology**  
Determine the right choice for an open architecture environment by adopting commercial building wiring and building automation standards.

**THE CORNING SOLUTION**

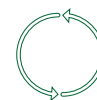
MOUNTING FEATURES	MOUNTING HEIGHT	CASSETTE TYPES
19 inch 23 inch	1U 2U 3U 4U	Pigtailed single-mode Pigtailed multimode Field Termination Adapters

[anixter.com/shopcorning/apac](http://anixter.com/shopcorning/apac)



**WHAT WE HEAR**

Challenges from the various commercial building stakeholders are:



Keeping up with **EVOLVING TECHNOLOGIES**



**AMORTISATION** of cabling systems



Supporting multiple **APPLICATIONS**



Reducing network **DOWNTIME**



Coping with **INCREASING BANDWIDTH**

**Infrastructure as a Platform**  
by Anixter

Infrastructure as a Platform by Anixter offers a standards-based, physical layer approach that provides a foundation to meet the high-performance demands of your commercial building.

## CONFIGURE

We help you discover and map your specific needs to the best solution.

- Fibre count
- Rack height
- Cassette types
- Security requirements

## BUNDLE

Your validated, preconfigured solutions are packaged and site ready.

- Mounting accessories
- Hardware lock kit
- Jumper management
- Spare parts

## DEPLOY

Controlled, repeatable solutions are delivered on time and under budget.

- Custom packaging and labelling
- Time-sensitive delivery options
- Staged project shipping
- Tailored last-mile delivery

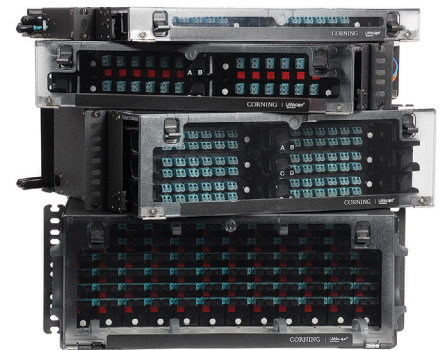
## CORNING CCH FEATURES

### ✓ REDUCE NETWORK DOWNTIME

- Interconnect and cross-connect capability is ideal for field connectorisation.
- Removable, translucent top covers (1U, 2U, 3U) and rear cover (4U) enhances visibility, and provides easy maintenance access.
- Design supports flexibility for installation and moves, adds and changes (MACs).

### ✓ SUPPORT MULTIPLE APPLICATIONS

- Accepts panels, modules and cassettes.
- Features a variety of field-termination options.
- Adaptable for use as a modular splice housing.
- Splices are stored and protected in same footprint.



Corning CCH hardware includes the CCH-01U, CCH-02U, CCH-03U and CCH-04U.

**> FOR MORE DETAILS VISIT [ANIXTER.COM/SHOPCORNING/APAC](https://www.anixter.com/shopcorning/apac)**

**About Anixter:** [anixter.com/aboutus](https://www.anixter.com/aboutus)  
**Legal Statement:** [anixter.com/legalstatement](https://www.anixter.com/legalstatement)

At Anixter, we enable the connected world. By building, connecting, protecting and powering valuable assets and critical infrastructures, we help to sustain and grow businesses and communities worldwide. We accomplish this by offering full-line solutions, technical intelligence, supply chain expertise and an unmatched global distribution network.

[anixter.com/asiapacific](https://www.anixter.com/asiapacific)

