

PRODUCT SOLUTIONS BRIEF
PANDUIT

COMMERCIAL BUILDING NETWORK PERFORMANCE



Through our strong global partnerships and alliances with manufacturers such as Panduit, we are able to present you with the following offering to meet your specific commercial building requirements.

26 and 28 AWG Copper Solutions

Panduit's 26 and 28 AWG Copper Solutions provide a unique and useful cable management solution for today's enterprise environments. The solutions offer a variety of benefits such as utilising less space, improving airflow and the potential for reducing operating costs. The improved flexibility saves time on moves, adds and changes (MACs), while the tight bend radius enables improved cable routing and management in high-density applications.

CHALLENGE SOLVERS

- Smaller cable diameter allows twice the amount of cords to be routed through cable managers and pathways compared to traditional Category 6 patch cords.
- Each patch cord delivers critical electrical component level performance. Centred de-embedded plug performs in the centre of the ANSI/TIA-568-C.2 Category 6 component range, which supports interoperability and optimises performance.
- U/UTP stranded 28 AWG copper cable with a nominal diameter of 3.8 mm allows for high-density installations and superior panel cable management.

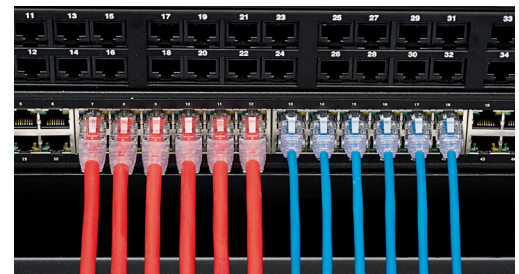
THE ANIXTER APPROACH

- **Network Flexibility**
Apply open architecture designs to accommodate your performance requirements for a highly scalable network.
- **Universal Cabling Topology**
Determine the right choice for an open architecture environment by adopting commercial building wiring and building automation standards.
- **Media Selection**
Choose the appropriate physical media from twisted-pair, optical fibre and direct-attached cables to address high-speed bandwidth requirements.

THE PANDUIT SOLUTION

COPPER CABLING	PATCH CORDS	CORD LENGTH
Cat 5e Cat 6 Cat 6A	28 AWG 26 AWG	2 - 20 meters

anixter.com/shoppanduit/apac



26 AWG and 28 AWG offerings in horizontal cable and patch cords offer Category 6A and Category 6 performance in an industry-leading cable diameter that allows more cables to route in the same space.



WHAT WE HEAR

Challenges from the various commercial building stakeholders are:



Keeping up with **EVOLVING TECHNOLOGIES**



AMORTISATION of cabling systems



Supporting multiple **APPLICATIONS**



Reducing network **DOWNTIME**



Coping with **INCREASING BANDWIDTH**

Infrastructure as a Platform
by Anixter

Infrastructure as a Platform by Anixter offers a standards-based, physical layer approach that provides a foundation to meet the high-performance demands of your commercial building.

CONFIGURE

We help you discover and map your specific needs to the best solution.

- Racking requirements
- Patch cord length
- Connector type
- Mounting method

BUNDLE

Your validated, preconfigured solutions are packaged and site ready.

- Horizontal managers
- Patch panels
- Net-Access™ cabinets
- Net-Verse cabinets

DEPLOY

Controlled, repeatable solutions are delivered on time and under budget.

- Custom packaging and labelling
- Time-sensitive delivery options
- Staged project shipping
- Tailored last-mile delivery

PANDUIT 26 AND 28 AWG COPPER SOLUTION FEATURES

✓ REDUCE NETWORK DOWNTIME

- Patented tangle-free latch prevents snags
- Labels provide easy identification of performance level, length and quality control number
- Plug lock-ins and latch guards prevent unauthorised or unintended removal of patch cords
- Integral pair manager optimises performance and consistency by reducing untwist at plug

✓ SUPPORT MULTIPLE APPLICATIONS

- Reduced cable diameter facilitates better air flow and cooling
- Smaller diameter cords occupy less than half the space of traditional patch cords
- Smaller wire gauge offers improved flexibility for easier move, add and change work
- Tighter bend radius allows for flexibility in patch cable routing, dressing and management



Space-saving solutions from Panduit free up valuable real estate in the telecommunications and commercial building space, allowing you to deploy more systems and services in the same footprint.

[FOR MORE DETAILS VISIT ANIXTER.COM/SHOPPANDUIT/APAC](https://www.anixter.com/shoppanduit/apac)

About Anixter: [anixter.com/aboutus](https://www.anixter.com/aboutus)
Legal Statement: [anixter.com/legalstatement](https://www.anixter.com/legalstatement)

At Anixter, we enable the connected world. By building, connecting, protecting and powering valuable assets and critical infrastructures, we help to sustain and grow businesses and communities worldwide. We accomplish this by offering full-line solutions, technical intelligence, supply chain expertise and an unmatched global distribution network.

[anixter.com/asiapacific](https://www.anixter.com/asiapacific)

