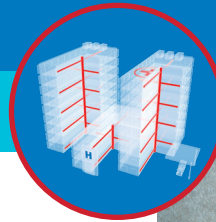


PRODUCT SOLUTIONS BRIEF
LEGRAND

HEALTHCARE FACILITY NETWORK PERFORMANCE



Through our strong global partnerships and alliances with manufacturers such as Legrand, we are able to present you with the following offering to meet your specific healthcare requirements.

Wallduct Medical Raceway System

Legrand's Wallduct Medical Raceway System is a high-capacity raceway for use in walls or ceilings. It can be mounted to the wall's surface or flush with the wall to meet equipment layout and room designs. The lay-in feature for enclosure of wire and cable is ideal for use in healthcare rooms, under raised floors or as a large capacity feeder for perimeter raceway. The cover plates are easily removed for wire and cable access.



Wallduct steel or aluminum raceway with lay-in features for enclosure of wire and cable

CHALLENGE SOLVERS

- Aluminum Wallduct is ideal for applications such as MRI rooms that require nonferrous metal raceways.
- Wallduct systems have products available in steel or aluminum construction that can easily be cut with a chop saw, jigsaw or table saw.
- All Wallduct products can be easily painted to match any wall décor or color scheme. Aluminum products have a protective peel coat finish with flush or surface-mounted designs.
- A flush in-floor raceway Trenchduct allows cables and wires to be hidden in the floor while feeding them directly to the medical equipment.

THE ANIXTER APPROACH

- **Network Flexibility**
Apply open-architecture designs to accommodate your performance requirements for a highly scalable network.
- **Cabling Topology**
Determine the right choice for an open-architecture environment by adopting healthcare facility wiring and building automation standards.
- **Application Support**
Deploy scalable designs that can support multiple and varied applications over an IP-based structured cabling system.

THE LEGRAND SOLUTION

MATERIAL TYPE	CABLE MANAGEMENT	ACCESSORIES
Nonmagnetic aluminum Galvannealed steel	Retainers Cover plates Connectors	Coupling angles Partitions End closures

anixter.com/shoplegrand



WHAT WE HEAR

Healthcare stakeholders are dealing with a variety of challenges:



Keeping up with **EVOLVING TECHNOLOGIES**



AMORTIZATION of cabling system investment



Supporting multiple **APPLICATIONS**



Reducing network **DOWNTIME**



Coping with **INCREASING BANDWIDTH**

Infrastructure as a Platform
by Anixter

Infrastructure as a Platform by Anixter offers a standards-based, physical layer approach that provides a foundation to meet the high-performance networking demands of your healthcare facility.

CONFIGURE

We help you discover and map your specific needs to the best solution.

- Bodies and covers
- Body accessories
- Fittings
- End closures

BUNDLE

Your validated, preconfigured solutions are packaged and site ready.

- Vista Point5 columns
- Intelligent PDUs
- Mighty Mo GX cabinets
- Mighty Mo LX cabinets

DEPLOY

Controlled, repeatable solutions are delivered on time and under budget.

- Custom packaging and labeling
- Time-sensitive delivery options
- Staged project shipping
- Tailored last-mile delivery

LEGRAND WALLDUCT FEATURES

✔ SUPPORTS MULTIPLE APPLICATIONS

- Trenchduct carries wire and cables to egress points anywhere on the floor or wall.
- This raceway-like system is built to carry large and heavy cables, making it ideal for medical equipment in hospital scan rooms.
- Three standard widths provide cable and wire requirements for most applications.

✔ REDUCES NETWORK DOWNTIME

- Complete line of fittings reduces field modifications by minimizing installation time and costs.
- Readily available warehouse stock provides for immediate order shipments.
- Extra corrosion resistance is provided and can be easily painted to match any room interior.
- Easy cable access for changes after installation is available by removing the cover plate.



Aluminum Wallduct installed in an MRI room

> FOR MORE DETAILS VISIT [ANIXTER.COM/SHOPLEGRAND](https://www.anixter.com/shoplegrand)

About Anixter: [anixter.com/aboutus](https://www.anixter.com/aboutus)
Legal Statement: [anixter.com/legalstatement](https://www.anixter.com/legalstatement)

At Anixter, we enable the connected world. By building, connecting, protecting and powering valuable assets and critical infrastructures, we help to sustain and grow businesses and communities worldwide. We accomplish this by offering full-line solutions, technical intelligence, supply chain expertise and an unmatched global distribution network.

1.800.ANIXTER | [anixter.com](https://www.anixter.com)

