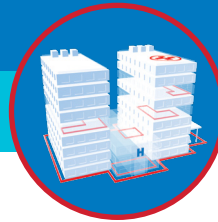


# PRODUCT SOLUTIONS BRIEF

## PANDUIT

### HEALTHCARE FACILITY RISK MANAGEMENT



Through our strong global partnerships and alliances with manufacturers such as Panduit, we are able to present you with the following offering to meet your specific healthcare requirements.

#### Break-Away Adapter

Panduit's Break-Away Adapter is an easy-release jack and plug assembly that allows any standard patch cord to "breakaway" upon a sudden pulling force. Adapters are constructed of Category 6A SD (26 AWG) UTP, unshielded twisted-pair stranded copper CM cable with MaTriX technology and high-performance RJ45 modular plug and releasable RJ45 modular jack, which are optimized for use with Panduit patch cords.



BKA6ZSD8INB, 8-inch Break-Away Adapter, Available in black only

#### CHALLENGE SOLVERS

- The Break-Away Adapter can be used in any environment where portable equipment is connected to an Ethernet port, including healthcare facilities, conference rooms and classrooms.
- The adapter releases under force to eliminate tripping hazards, protect expensive equipment and prevent damage to infrastructure.
- The Break-Away Adapter attaches to a standard copper patch cord and then is plugged into either a piece of equipment or an RJ45 outlet. When pulling force is applied, the adapter is released, which prevents equipment from being pulled off carts or tables or jacks being pulled from walls, helping to avoid costly damage.
- The adapter can be used wherever patch cords may experience a sudden pulling force such as a tripping hazard or sudden movement where the patch cord is not being properly released.

#### THE ANIXTER APPROACH

- **Specialty Units**  
Protect patients and comply with privacy regulations with attention to complex specialty units.
- **Emergency Room**  
Improve staff safety and care through effective management of high-stress and high-traffic emergency settings.
- **Biomedical and Diagnostics**  
Protect valuable equipment and potentially harmful materials in biomedical and diagnostic areas.



#### WHAT WE HEAR

Healthcare stakeholders are dealing with a variety of challenges:



Creating **SAFE** environments for patients and staff



Preventing **THEFT** of medicine and radiological materials



Achieving **REGULATORY COMPLIANCE**



Preventing **CYBER THREATS** to patient records



Limiting physical building and network **ACCESSIBILITY**

#### THE PANDUIT SOLUTION

##### RJ45 PATCH CORDS

Category 5e  
Category 6  
Category 6A

##### COLOR BANDS

10 different colors

##### LOCK-IN DEVICES

Standard  
Recessed  
Super recessed

[anixter.com/shoppanduit](http://anixter.com/shoppanduit)

**Infrastructure  
as a Platform**  
by Anixter

Infrastructure as a Platform by Anixter provides a practical, configurable and integrated approach to deploy physical security infrastructure into your healthcare environment.

## CONFIGURE

We help you discover and map your specific needs to the best solution.

- Patching requirements
- Cable assemblies
- Required length
- Color bands

## BUNDLE

Your validated, preconfigured solutions are packaged and site ready.

- Lock-in device
- Plug latch guards
- QuickNet™ plug packs
- RJ45 jack modules

## DEPLOY

Controlled, repeatable solutions are delivered on time and under budget.

- Custom packaging and labeling
- Time-sensitive delivery options
- Staged project shipping
- Tailored last-mile delivery

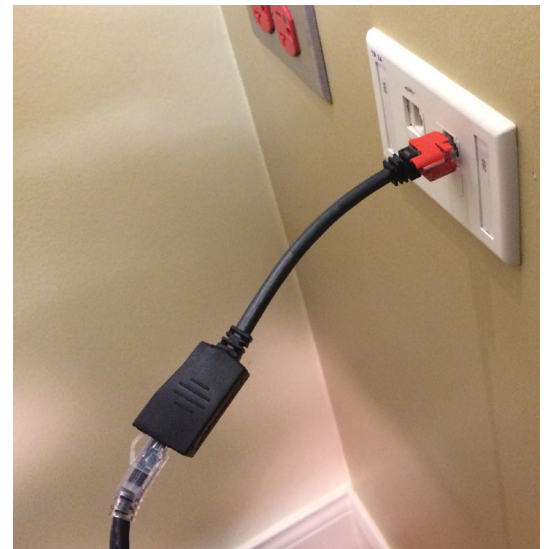
### PANDUIT BREAK-AWAY ADAPTER FEATURES

#### ✓ CREATES SAFE ENVIRONMENTS FOR PATIENTS AND STAFF

- Limits risk of tripping and falling for patients and staff
- Protects equipment that is frequently wheeled between patient rooms
- Breaks when medical cart rolls away from the wall

#### ✓ ACHIEVES REGULATORY COMPLIANCE

- Meets all Category 6A requirements including alien crosstalk
- Exceeds all ANSI/TIA-568-C.2 and ISO 11801 Class E<sub>A</sub> Edition 2.1 requirements
- Features backward compatibility and works with Category 6 and 5e channels



The Break-Away Adapter can be locked in to equipment or in-wall connections using one of Panduit's lock-in devices.

**> FOR MORE DETAILS VISIT [ANIXTER.COM/SHOPPANDUIT](https://www.anixter.com/shoppanduit)**

**About Anixter:** [anixter.com/aboutus](https://www.anixter.com/aboutus)  
**Legal Statement:** [anixter.com/legalstatement](https://www.anixter.com/legalstatement)

At Anixter, we enable the connected world. By building, connecting, protecting and powering valuable assets and critical infrastructures, we help to sustain and grow businesses and communities worldwide. We accomplish this by offering full-line solutions, technical intelligence, supply chain expertise and an unmatched global distribution network.

1.800.ANIXTER | [anixter.com](https://www.anixter.com)

