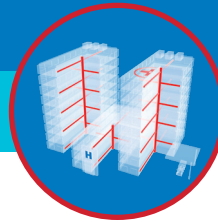


PRODUCT SOLUTIONS BRIEF
SPECIFIED TECHNOLOGIES INC.

HEALTHCARE FACILITY NETWORK PERFORMANCE



Through our strong global partnerships and alliances with manufacturers such as Specified Technologies, Inc., (STI) we are able to present you with the following offering to meet your specific healthcare requirements.

EZ-Path® Fire-Rated Cable Pathways

STI's EZ-Path Fire-Rated Cable Pathways are designed with ease of use and installation. Tested and approved for use in wall and floor applications for cable capacities of 0 to 100 percent visual fill, the devices with brackets can be installed in new or existing construction. They can be installed directly to wall framing before wall-board layers are in place. In addition to standard fixed steel retaining plates, split/retrofit and multigang plate options are available to allow for use in all possible construction scenarios.



EZ-Path Series 22, 33 and 44+ fire-rated cable pathways

CHALLENGE SOLVERS

- Factory-engineered pathways provide the proper amount of intumescent material to ensure fire and smoke protection of fire-rated barriers and partitions. EZ-Path Fire Rated Pathways are 100 percent code compliant right out of the box.
- Moves, adds and changes of low-voltage cabling systems are made easy because there is nothing to activate, remove, replace, adjust, open, close or tighten to maintain compliance when penetrating a fire barrier or partition.
- There is no negative effect on the physical plant or channel performance with EZ-Path products as emerging technologies support hospital electronic systems and Category 6A cabling systems are becoming more prevalent.
- The EZ-Path System requires no unsealing, resealing or adjustment of any kind, and pulling lines can be left in place and cables can be remotely pulled through multiple barriers, helping to minimize hospital acquired infections.

THE ANIXTER APPROACH

- **Network Flexibility**
Apply open-architecture designs to accommodate your performance requirements for a highly scalable network.
- **Cabling Topology**
Determine the right choice for an open-architecture environment by adopting healthcare facility wiring and building automation standards.
- **Application Support**
Deploy scalable designs that can support multiple and varied applications over an IP-based structured cabling system.

THE SPECIFIED TECHNOLOGIES INC. SOLUTION

HEIGHT AND WIDTH	LENGTH	MAX CABLE CAPACITY
1.5 in. x 1.5 in.	10.5 in.	25 ±
3 in. x 3 in.	10.5 in.	120 ±
4 in. x 4 in.	14.5 in.	268 ±

anixter.com/shopsti



WHAT WE HEAR

Healthcare stakeholders are dealing with a variety of challenges:



Keeping up with **EVOLVING TECHNOLOGIES**



AMORTIZATION of cabling systems



Supporting multiple **APPLICATIONS**



Reducing network **DOWNTIME**



Coping with **INCREASING BANDWIDTH**

Infrastructure as a Platform
by Anixter

Infrastructure as a Platform by Anixter offers a standards-based, physical layer approach that provides a foundation to meet the high-performance networking demands of your healthcare facility.

CONFIGURE

We help you discover and map your specific needs to the best solution.

- Pathway series
- Wall plate design
- Gang plate type
- Floor grid design

BUNDLE

Your validated, preconfigured solutions are packaged and site ready.

- Radius control modules
- Extension module
- Smoke and acoustical pathway
- Wall plates

DEPLOY

Controlled, repeatable solutions are delivered on time and under budget.

- Custom packaging and labeling
- Time-sensitive delivery options
- Staged project shipping
- Tailored last-mile delivery

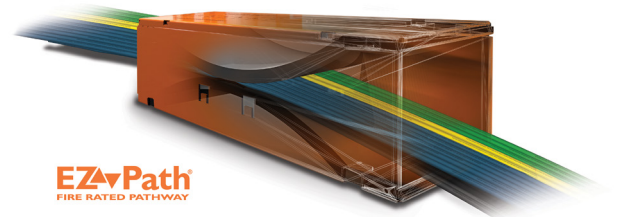
STI EZ-PATH PRODUCT FEATURES

✓ REDUCES NETWORK DOWNTIME

- The self-adjusting sealing mechanism has nothing to remove, replace, adjust or tighten
- No unsealing and resealing, which allows for remote cable pulls using a pull line
- Cables are not squeezed so there is little potential for cross-talk
- It facilitates cable pulling with no loose liners or rough edges

✓ AMORTIZES CABLING SYSTEMS

- Removal of labor costs related to sealing unsealing, and resealing cable penetrations
- The only maintenance-free self-sealing fire-rated pathway in the market
- Retrofitting split pathways for mounting hardware for use with previously installed cables
- Reduction of lost revenue of patient-occupied space due to maintenance or construction downtime



Self-sealing fire and smoke devices for floor and wall penetrations

> FOR MORE DETAILS VISIT [ANIXTER.COM/SHOPSTI](https://www.anixter.com/shopsti)

About Anixter: [anixter.com/aboutus](https://www.anixter.com/aboutus)

Legal Statement: [anixter.com/legalstatement](https://www.anixter.com/legalstatement)

At Anixter, we enable the connected world. By building, connecting, protecting and powering valuable assets and critical infrastructures, we help to sustain and grow businesses and communities worldwide. We accomplish this by offering full-line solutions, technical intelligence, supply chain expertise and an unmatched global distribution network.

1.800.ANIXTER | [anixter.com](https://www.anixter.com)

