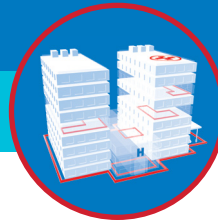


PRODUCT SOLUTIONS BRIEF  
**SPECIFIED TECHNOLOGIES INC.**

**HEALTHCARE FACILITY RISK MANAGEMENT**

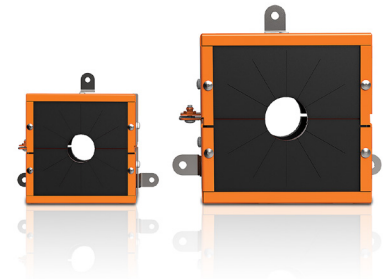


Through our strong global partnerships and alliances with manufacturers such as Specified Technologies Inc., we are able to present you with the following offering to meet your specific healthcare facility requirements.

**EZ-Path® Retrofit Device**

Cable sleeves may start out code compliant, but over time, cabling growth and repeated modifications can lead to deficiencies. Restoring overfilled sleeves to code compliance in healthcare facilities has been increasingly challenging until now.

The new EZ-Path® Retrofit Device remediates deficient overfilled cable sleeves by providing instant code compliance.



Instant compliance for overfilled sleeves

**CHALLENGE SOLVERS**

- Due to the recent code changes, the Center for Medicare and Medicaid (CMS) now require authorities having jurisdiction (AHJs) to enforce that healthcare facilities correct deficiencies within 60 days or risk losing funding. The EZ-Path® Retrofit Device transforms deficient overfilled sleeves back to compliance in minutes.
- EZ-Path® Retrofit Device offers instant compliance while allowing the sleeve to still remain active. Firestop materials can be removed or remain in place, and cables can exit or enter the device from any direction, allowing for future cable moves, adds and changes (MAC work).
- UL® Systems specify the maximum cable fill for putty systems is 35% and 50% calculated fill for sealants. Any sleeve filled above those percentages should be considered non-compliant. The EZ-Path® Retrofit Device increases cable fill in sleeves by allowing from 50% to 100% visual fill.

**THE ANIXTER APPROACH**

- **Specialty Units**  
 Protect patients and maintain compliance with attention to complex specialty units, including electrical facilities.



**WHAT WE HEAR**

Healthcare stakeholders are dealing with a variety of challenges:



Creating **SAFE** environments for patients and staff



Preventing **THEFT** of medicine and radiological materials



Achieving **REGULATORY COMPLIANCE**



Preventing **CYBER THREATS** to patient records



Limiting physical building and network **ACCESSIBILITY**

**THE SPECIFIED TECHNOLOGIES INC. SOLUTION**

**RETROFIT DEVICE**

EZDR200  
 EZDR400

**FIRE-RATED PATHWAYS**

Grommets – RFG1, RFG2  
 Series 22, 33, 44+

**SMOKE AND ACOUSTICAL PATHWAYS**

NEZ33, NEZ33R  
 NEZ33CK

[anixter.com/shopsti](http://anixter.com/shopsti)

**Infrastructure as a Platform**  
 by Anixter

Infrastructure as a Platform by Anixter provides a practical, configurable and integrated approach to deploy physical security infrastructure into your healthcare environment.

## CONFIGURE

We help you discover and map your specific needs to the best solution.

- Two sizes to fit 2-in. or 4-in. sleeves
- Optional mounting tabs

## BUNDLE

Your validated, preconfigured solutions are packaged and site ready.

- iFirestop documentation app and tool
- EZ-Path® Fire-Rated Pathway
- EZ-Firestop® Grommet
- EZ-Path® Smoke and Acoustical Pathway

## DEPLOY

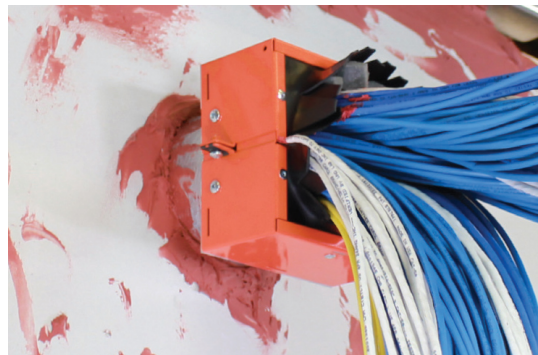
Controlled, repeatable solutions are delivered on time and under budget.

- Custom packaging and labeling
- Time-sensitive delivery options
- Staged project shipping
- Tailored last-mile delivery

## SPECIFIED TECHNOLOGIES INC. EZ-PATH® RETROFIT DEVICE FEATURES

### ✓ EASY TO INSTALL WITH NO ADDITIONAL MAINTENANCE

- No additional fire stopping required
- Two-piece design quickly installs around the cable bundle, locking securely onto the end of the sleeve
- Optional mounting tabs included for barrier attachment
- Built-in fire and smoke sealing system
- Expands rapidly to close the void when exposed to fire or high temperatures
- Heavy-gauge galvanized steel housing



EZ-Path® Retrofit Device restores compliance instantly.

### ✓ ACCOMMODATES STANDARD CONDUIT BUSHINGS

- The square shape allows the device to be ganged in tight spaces
- Cable may exit or enter the device from any direction, allowing for future moves, adds and changes
- No additional putty or sealant is required
- Existing putty or sealant may be removed or left in place
- Available in two convenient sizes to fit 2-in. and 4-in. trade size EMT or rigid metallic conduit sleeves

## > FOR MORE DETAILS VISIT [ANIXTER.COM/SHOPSTI](https://www.anixter.com/shopsti)

**About Anixter:** [anixter.com/aboutus](https://www.anixter.com/aboutus)

**Legal Statement:** [anixter.com/legalstatement](https://www.anixter.com/legalstatement)

At Anixter, we enable the connected world. By building, connecting, protecting and powering valuable assets and critical infrastructures, we help to sustain and grow businesses and communities worldwide. We accomplish this by offering full-line solutions, technical intelligence, supply chain expertise and an unmatched global distribution network.

1.800.ANIXTER | [anixter.com](https://www.anixter.com)



17T8072NA © 2017 Anixter Inc.

Products. Technology. Services. Delivered Globally.