

PRODUCT SOLUTIONS BRIEF
UPSITE TECHNOLOGIES

MICRO DATA CENTER INFRASTRUCTURE MANAGEMENT



Through our strong global partnerships and alliances with manufacturers such as Upsite Technologies, we are able to present you with the following offering to meet your specific data center requirements.

EnergyLok® Environmental Monitoring System (EMS) 300™

Upsite Technologies' EnergyLok EMS 300 is a wireless sensor network manager that receives and aggregates signals from up to 150 wireless sensors that can be displayed in a centralized, easy-to-access web interface. The EMS 300 provides a quick and concise understanding of the current sensor network, as well as direct alarm notifications and data trending information from any smartphone or web browser.

CHALLENGE SOLVERS

- Battery-operated wireless temperature and humidity sensor monitoring systems provide accurate, timely data while consuming minimal power, and allow for close monitoring of environmental parameters within facilities.
- Output readings as Modbus, BACnet, and SNMP for integration with building management systems (BMS) and network management systems (NMS).
- Wireless leak detection sensors seamlessly integrate with the EMS 300. Users can quickly and efficiently add new wireless sensors and relocate existing sensors. The EMS 300's sensor discovery mechanism automatically detects and displays modifications to the wireless system.
- A wireless point repeater provides a means for extending the range of the 418 MHz battery-powered sensors and controls. Multiple repeaters can co-exist and communicate with the EMS 300 and other mesh repeaters.

THE ANIXTER APPROACH

- **Environmental monitoring**
 Use temperature, humidity and pressure sensor technology to achieve conditional environmental control.

THE UPSITE TECHNOLOGIES SOLUTION

RAISED FLOOR	RACK AND ROW	ROOM
KoldLok®	HotLok® AisleLok®	EnergyLok®

anixter.com/shopupsite



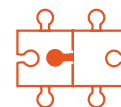
ENERGYLOK®

The EnergyLok EMS 300 provides a cost-effective monitoring solution that can be installed across network closets, server rooms and enterprise data centers.



WHAT WE HEAR

Challenges from various data center stakeholders:



INTEGRATING with business process



No technology **EVALUATION** tools



Supplier **INTEGRATION** competency



Interdepartmental **CONFLICT**



Cost of **IMPLEMENTATION**

Infrastructure as a Platform
 by Anixter

Infrastructure as a Platform by Anixter provides a comprehensive approach to defining data center infrastructure management (DCIM), which starts at the physical layer, by simplifying deployment and integration with your business processes.

CONFIGURE

We help you discover and map your specific needs to the best solution.

- EMS model
- Sensor type
- Sensor placement
- Wireless repeaters

BUNDLE

Your validated, preconfigured solutions are packaged and site ready.

- AisleLok aisle airflow management
- HotLok rack airflow management
- KoldLok raised floor airflow management
- Cooling optimization services

DEPLOY

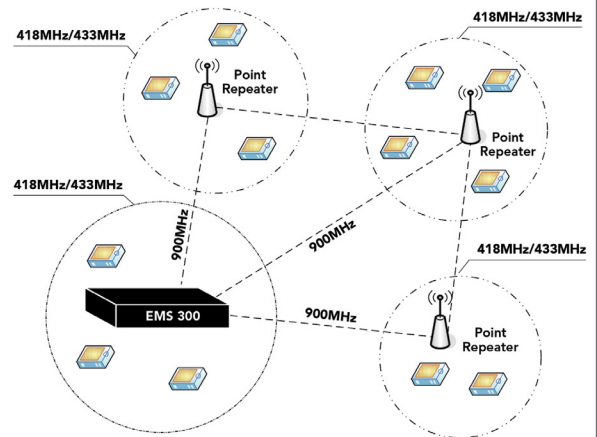
Controlled, repeatable solutions are delivered on time and under budget.

- Custom packaging and labeling
- Time-sensitive delivery options
- Staged project shipping
- Tailored last-mile delivery

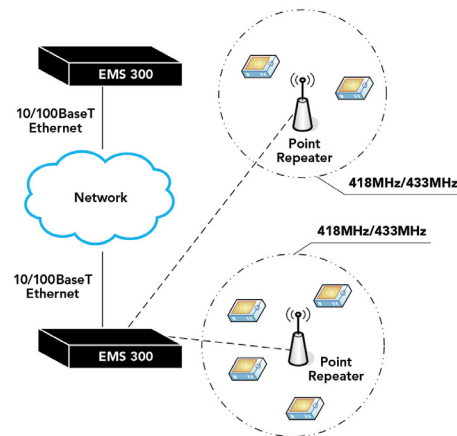
UPSITE TECHNOLOGIES EMS 300 FEATURES

- ✓ **SIMPLE INTEGRATION**
 - Web interface enables direct alarm notification and stand-alone operation
 - Output readings such as Modbus, BACnet and SNMP for integration with other systems
 - Allows an unlimited variety of wireless equipment to communicate directly with a BMS or NMS
- ✓ **MINIMAL IMPLEMENTATION COSTS**
 - Easy, low-cost installation
 - Wireless design reduces installation and system expansion costs
 - Four hardwired digital inputs and two hardwired relay outputs allow for future expansion

The EMS 300 operates as part of a wireless mesh network.



The EMS 300 can also be used as a network repeater.



➤ FOR MORE DETAILS VISIT ANIXTER.COM/SHOPUPSITE

About Anixter: anixter.com/aboutus
Legal Statement: anixter.com/legalstatement

At Anixter, we enable the connected world. By building, connecting, protecting and powering valuable assets and critical infrastructures, we help to sustain and grow businesses and communities worldwide. We accomplish this by offering full-line solutions, technical intelligence, supply chain expertise and an unmatched global distribution network.

1.800.ANIXTER | anixter.com

