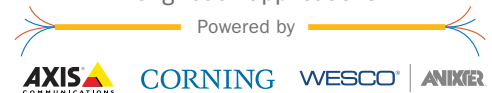


READY. SET. CONNECT.

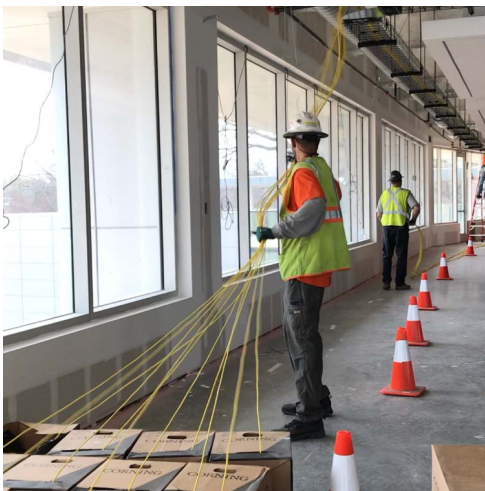
Remote, long-reach deployments can be time-consuming, complicated, and costly. Whether you are connecting a camera in a parking garage or entry controls throughout a campus, the end-to-end Ready. Set. Connect. solution can streamline your installation and simplify your deployment.

READY. SET. CONNECT.

A simple solution for smaller networks and long-reach applications.



Fast, Simple, Cost-Effective: Improve Your Long-reach Deployments

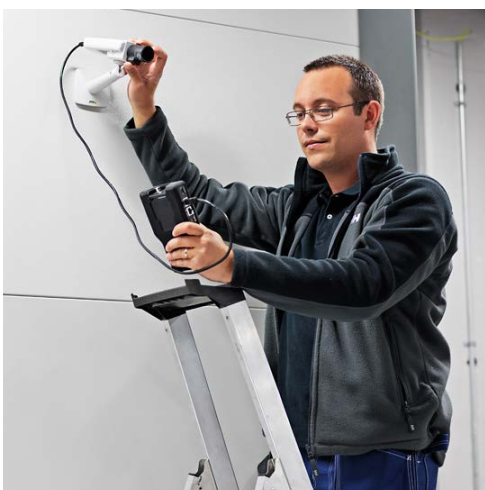


Tight project schedule?

- Put an end to building piece-part solutions from multiple sources.
- Avoid coordinating multiple trades.
- Easily design the specific solution you need with a full suite of intuitive tools.

No remote connectivity?

- Quickly deploy your infrastructure beyond 2,000 feet and easily set up your network with this simple pre-configured solution.
- No special certification required.



Maxed out pathways?

- Eliminate single-purpose infrastructure and overcome space constraints with streamlined infrastructure that can scale for day 2 technology needs.

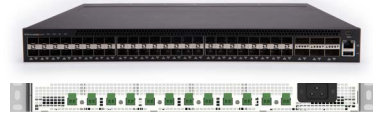
Unplanned connectivity costs adding up?

- Save up to 50% on network deployments.
- Reduce IDF closets, local power and pathways.
- Optimize storage and bandwidth needs for each device.

3 EASY STEPS TO SEAMLESS INTEGRATION

READY the infrastructure

Corning switch (SDDP)
and power supply unit



AXIS Camera Station
S11 Network Video Recorders
and included software



1

SET the network

Corning ActiFi cable
and access node



2

CONNECT IP devices

Axis network speakers
and audio solution

Axis network cameras

Axis intercoms and
entry solutions



3

Any contractor and integrator can deploy this simple, easy-to-install solution. Utilize existing infrastructure and remove the need to rip and replace with flexible upgrade options.

READY TO GET STARTED?

Contact your WESCO | Anixter sales representative today to learn more or to engage with our Technology & Support Services team. We offer design assistance, product selection and can create a list of materials for your next project.

For more tools that
make the job easier, visit
anixter.com/readyssetconnect

Anixter Inc. World Headquarters
2301 Patriot Boulevard
Glenview, Illinois 60026
224.521.8000

WESCO International
225 West Station Square Drive, Suite 700
Pittsburgh, PA 15219
412.454.2200