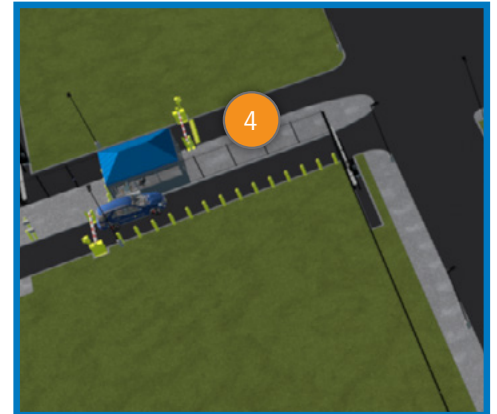


SOLUTIONS Linecard

DATA CENTER SOLUTIONS AT A GLANCE



Anixter has a broad product and service offering to fit your current and future data center needs.

1 Electrical Infrastructure

- Medium-voltage cable (15-35 kV)
- Medium-voltage term kits
- Building wire
- Cable tray
- Term kits
- Lighting
- Grounding
- Bare copper
- Flexible battery cable (DLO)
- Conduit
- Lugs and connectors

2 Power Substation

- Transformers
- Circuit protection
- Switch gear
- Control house equipment
- Automated switches

3 Network Infrastructure

- High-performance copper and fiber cabling systems
- High-speed interconnects
- Racks and enclosures
- Cable management and pathways
- Grounding and bonding
- Building entrance protection (BEP)
- WIFI (Wireless Ethernet)
- Network transmission and access
- Switches and routers
- PoE switches and injectors
- Media converters
- KVM and console management
- Tools and test equipment

4 Security Solutions

- Access control
- Asset tracking
- Cabinet electronic locking
- Video surveillance
- Perimeter detection
- Intercom, sound and paging
- Security consoles, racks and cabinets
- Video monitors

5 Power and Thermal Solutions

- Rack PDUs
- UPS systems
- Surge protection
- Thermal management (active and passive)
- Hot and cold aisle containment
- High airflow dispersion floor tiles
- Network and environmental monitoring
- Power management and DCIM

Industrial Technology Alliance Partners:



Power



One of the first steps to building a data center is getting power to the facility. At a crowded construction site, getting work done quickly and safely is key. Anixter can stock material locally to feed your job as needed.

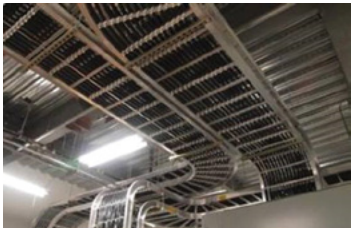
Supported products

Switchgear, panel boards/load centers, transformers, generators, automatic transfer switches, busway, feeder cables, medium-voltage terminations, conduit, conduit fittings and cable tray

Deployment Services

- INSTA-REEL for medium-voltage power cables
- Enhanced PARASPIN
- Staging and inventory management solutions

Rough-In



The rough-in stage in a data center can be quite different than typical commercial construction, as most of the power is distributed to server bays, not workstations. A large amount of data cabling, security and surveillance is also needed. More cable and fiber tray is used in data centers rather than conduit and armored cables. As data centers can be very large and the local storage area might be quite a distance, reducing unproductive labor in material management can be critical.

Supported products

600 volt cables, direct current cables, cable and fiber tray, fiber optic cable, data cabling, enclosures, transformers, panel boards, load centers and lighting fixtures

Deployment Services

- Rough-in job cart
- Job cages
- SLIM-SPIN
- Rack and cabinet pre-assembly
- Whole order delivery

Finish



To reduce installation time and complete the project on schedule, product must be delivered to the job site, ready to install. As data center products are highly visible, Anixter ensures they are delivered to limit damage. All products can be tagged or kitted to keep the job site organized. Surveillance cameras can be preloaded with IP addresses and tested for out-of-box failure, saving time and labor on the job site.

Supported products:

Lamps, emergency and exit lights, cameras, panel covers and wiring devices

Deployment Services

- Job cages
- Camera IP addressing and DOA testing
- Cable bundling
- UPS and PDU IP addressing
- Labeling copper/fiber cords and trunks

About Anixter: anixter.com/aboutus

Legal Statement: anixter.com/legalstatement

18D1036GL © 2018 Anixter Inc. · 10/18

Anixter Inc. World Headquarters

2301 Patriot Boulevard
Glenview, Illinois 60026
1.224.521.8000