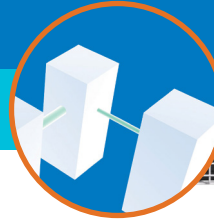


PRODUCT SOLUTIONS BRIEF
LEGRAND

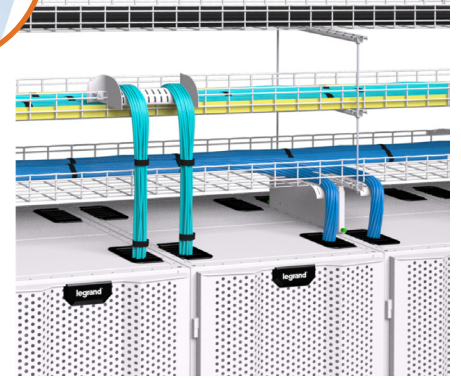
DATA CENTER NETWORK MIGRATION



Through our strong global partnerships and alliances with manufacturers such as Legrand, we are able to present you with the following offering to meet your specific data center requirements.

Cablofil® Wire Mesh

Legrand has designed cable pathways for both copper and fiber to adapt to each twist and turn cables must make, while ensuring proper bend radius and network performance. With the Cablofil® complete range of products, Legrand provides exceptional solutions, seamlessly integrated with physical infrastructure for easy installation and superior flexibility and scalability.



Cablofil® Wire Mesh

CHALLENGE SOLVERS

- The steel structure of Cablofil tray reduces Electromatic Interference (EMI) and stray static charges.
- Our powder coated tray method allows a UL approved splice without scraping paint.
- FAS (Fast Assembly System) secures tray without additional hardware.
- Multiple cable pathways are compact with easy access to cables.
- Cable shields and cross bridges keeps cable separate and safe.
- Drop out accessories for fiber cabling drops with wide radius bends for optimal signal efficiencies.

THE ANIXTER APPROACH

- **Network flexibility**
Apply designs to accommodate your performance requirements and highly scalable network architecture demands.
- **Cabling topology**
Determine the right choice for your computing requirements with careful consideration for end of row (EoR), middle of row (MoR), top of rack (ToR) or centralized cabling architectures.
- **Media selection**
Choose the appropriate cabling media from twisted pair, optical fiber and direct attached to address high-speed bandwidth requirements.
- **Density demands**
Deploy scalable designs that accommodate for uncertain density requirements.

THE LEGRAND CABLOFIL SOLUTION

WIRE MESH TRAY	EASY-TO-INSTALL SUPPORTS	FIBER-FRIENDLY ACCESSORIES
Safe-T-Edge UL Classified Painted Tray Patented Optimized Design	Unique Fast Assembly System Reduces installation time and cost	Tray Liners Cable Shields & Cross Bridges Drop Outs

anixter.com/shoplegrand



WHAT WE HEAR

Challenges from various data center stakeholders:



AMORTIZATION of cabling investment



Infrastructure **COMPLEXITY**



Restrictions of **LEGACY SYSTEMS**



SPEED of deployment



Pace of **INNOVATION**, adoption

Infrastructure as a Platform
by Anixter

Infrastructure as a Platform by Anixter offers a standards-based, physical layer approach that provides a foundation to meet the high-performance computing demands of your data center.

CONFIGURE

We help you discover and map your specific needs to the best solution.

- 10-ft. straight sections
- Boltless mounting
- Easy splicing
- Range of accessories

BUNDLE

Your validated, preconfigured solutions are packaged and site ready.

- J-hooks
- Wall and floor box brackets
- Cable and conduit fasteners

DEPLOY

Controlled, repeatable solutions delivered on time and under budget.

- Custom packaging and labeling
- Time-sensitive delivery options
- Staged project shipping
- Tailored last-mile delivery

LEGRAND CABLOFIL® WIRE MESH FEATURES

✓ ADAPTS TO COMPLEX SPACES AND INSTALLS QUICKLY

- All elbows, Ts, drops and risers are made from the straight sections of Cablofil by the installer on site.
- The tray can adapt easily to any installation and be cut to dodge any obstacle on-site.
- Our patented Fast Assembly System (FAS) allows you to secure the tray to the support system without any special fasteners. Only a screwdriver is needed.

✓ NEAT AND WORKMANLIKE

- With Cablofil's unique welded wire mesh design, there are a wide range of places where cables can be secured.
- The product's open mesh design delivers high-quality cable installations that are neat and workmanlike, which assists the installer in easily meeting NEC requirements



Cablofil® Wire Mesh

> FOR MORE DETAILS VISIT [ANIXTER.COM/SHOPLEGRAND](https://anixter.com/shoplegrand)

About Anixter: anixter.com/aboutus

Legal Statement: anixter.com/legalstatement

Anixter International is a leading global distributor of Network & Security Solutions, Electrical & Electronic Solutions and Utility Power Solutions. We help build, connect, protect, and power valuable assets and critical infrastructures. From enterprise networks to industrial MRO supply to video surveillance applications to electric power distribution, we offer full-line solutions, and intelligence, that create reliable, resilient systems that sustain businesses and communities. Through our unmatched global distribution network along with our supply chain and technical expertise, we help lower the cost, risk and complexity of our customers' supply chains.

1.800.ANIXTER | anixter.com

