

# UTG SOLUTIONS BRIEF COMMSCOPE



## COPPER

The Utility Grade INFRASTRUCTURE (UTG<sup>SM</sup>) program has been developed alongside world-class global technology alliance partners. These UTG-rated components from CommScope enable you to support the rapid evolution of technology in today's building environments.

### PRODUCT OVERVIEW

CommScope's UTG solutions provide a common infrastructure platform optimized for operational technology and high-performance applications.

Full-channel solutions include UTG-rated plenum cabling, RJ45 patch panels, information outlets and patch cords.

### UTG PERFORMANCE

UTG-rated cabling solutions are tested and verified by UL to exceed category performance in a number of areas. Full UTG performance requirements are outlined in the UTG Technical Application Guide.

Key performance characteristics of UTG-rated CommScope solutions include:

#### Extended transmission distances

- UTG10: 10Mbps at 185m
- UTG20: 10Mbps at 185m
- UTG10: 10Gbps at 50m
- UTG20: 10Gbps at 100m

#### Higher bandwidth capabilities

- UTG10: 450MHz (exceeds UTG min. 425MHz)
- UTG20: 500MHz

#### Higher frames per second (FPS) and lower compression

- UTG10: 150m
- UTG20: 150m

#### Bundling sizes for more PoE applications

- UTG10: 72 cables
- UTG20: 90 cables

#### 4K UHD streaming at extended distances

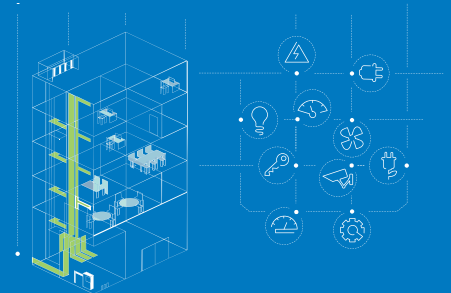
- UTG10: 100m
- UTG20: 100m

#### Next-generation Wi-Fi technology

- UTG10: 802.11ac and 802.11ax at 50m
- UTG20: 802.11ac and 802.11ax at 100m



Support more technologies  
with one cable.



### Field Test and Certification

UTG-certified installers will have the ability to field test and certify to UTG-specific performance characteristics using test equipment from Fluke Networks. Contact your local Anixter representative for more information.

## FLEX FORCE RATING

Each UTG-rated cable will include a Flex Force rating based on a range of ounce-feet, highlighting the ease of handling for pulling, installing and terminating. See the UTG Technical Application Guide for more information.

### CommScope's Flex Force Rating

- UTG10: Flex Force 2
- UTG20: Flex Force 3

Flex Force Testing	UTG FLEX FORCE TABLE		
	FLEX FORCE 3 46-60 oz-ft	FLEX FORCE 2 31-45 oz-ft	FLEX FORCE 1 16-30 oz-ft
Craft Friendliness	GOOD	BETTER	BEST

## UTG10 SOLUTION

CommScope Part No.	Anixter Part No.	Product Details	
<b>Riser Jacket</b>			
1071E-UTGBLU-W1	CMR-423COM-UTG10U-06	UTG10 premise horizontal cable, 4PR U/UTP, CMR, 23AWG solid conductors, blue jacket, 1,000 ft.	
1071E-UTGWHT-W1	CMR-423COM-UTG10U-01	UTG10 premise horizontal cable, 4PR U/UTP, CMR, 23AWG solid conductors, white jacket, 1,000 ft.	
1071E-UTGSLT-W1	CMR-423COM-UTG10U-09	UTG10 premise horizontal cable, 4PR U/UTP, CMR, 23AWG solid conductors, slate jacket, 1,000 ft.	
1071E-UTGBLK-W1	CMR-423COM-UTG10U-02	UTG10 premise horizontal cable, 4PR U/UTP, CMR, 23AWG solid conductors, black jacket, 1,000 ft.	
<b>Plenum Jacket</b>			
2071E-UTGBLU-W1	CMP-423COM-UTG10U-06	UTG10 premise horizontal cable, 4PR U/UTP, CMP, 23AWG solid conductors, blue jacket, 1,000 ft.	
2071E-UTGWHT-W1	CMP-423COM-UTG10U-01	UTG10 premise horizontal cable, 4PR U/UTP, CMP, 23AWG solid conductors, white jacket, 1,000 ft.	
2071E-UTGSLT-W1	CMP-423COM-UTG10U-09	UTG10 premise horizontal cable, 4PR U/UTP, CMP, 23AWG solid conductors, slate jacket, 1,000 ft.	
2071E-UTGBLK-W1	CMP-423COM-UTG10U-02	UTG10 premise horizontal cable, 4PR U/UTP, CMP, 23AWG solid conductors, black jacket, 1,000 ft.	
<b>LSZH and Euroclass Jacket</b>			
	<b>LSZH Jacket</b>	<b>Euroclass Jacket</b>	
3071E-C-UTGWHT-W1	N/A	CCA-423COM-UTG10U-01	UTG10 premise horizontal cable, 4PR U/UTP, LSZH, CCA, 23AWG solid conductors, white jacket, 1,000 ft.
3071E-UTGBLU-W1	CMZ-423COM-UTG10U-06	DCA-423COM-UTG10U-06	UTG10 premise horizontal cable, 4PR U/UTP, LSZH, DCA, 23AWG solid conductors, blue jacket, 1,000 ft.
3071E-UTGWHT-W1	CMZ-423COM-UTG10U-01	DCA-423COM-UTG10U-01	UTG10 premise horizontal cable, 4PR U/UTP, LSZH, DCA, 23AWG solid conductors, white jacket, 1,000 ft.
3071E-UTGSLT-W1	CMZ-423COM-UTG10U-09	DCA-423COM-UTG10U-09	UTG10 premise horizontal cable, 4PR U/UTP, LSZH, DCA, 23AWG solid conductors, slate jacket, 1,000 ft.

## UTG20 SOLUTION

CommScope Part No.	Anixter Part No.	Product Details	
<b>Riser Jacket</b>			
1091B-UTGBLU-W1	CMR-423COM-UTG20-06	UTG20 premise horizontal cable, 4PR U/UTP, CMR, 23AWG solid conductors, blue jacket, 1,000 ft.	
1091B-UTGWHT-W1	CMR-423COM-UTG20-01	UTG20 premise horizontal cable, 4PR U/UTP, CMR, 23AWG solid conductors, white jacket, 1,000 ft.	
1091B-UTGSLT-W1	CMR-423COM-UTG20-09	UTG20 premise horizontal cable, 4PR U/UTP, CMR, 23AWG solid conductors, slate jacket, 1,000 ft.	
1091B-UTGBLK-W1	CMR-423COM-UTG20-02	UTG20 premise horizontal cable, 4PR U/UTP, CMR, 23AWG solid conductors, black jacket, 1,000 ft.	
<b>Plenum Jacket</b>			
2091B-UTGBLU-W1	CMP-423COM-UTG20U-06	UTG20 premise horizontal cable, 4PR U/UTP, CMP, 23AWG solid conductors, blue jacket, 1,000 ft.	
2091B-UTGWHT-W1	CMP-423COM-UTG20U-01	UTG20 premise horizontal cable, 4PR U/UTP, CMP, 23AWG solid conductors, white jacket, 1,000 ft.	
2091B-UTGSLT-W1	CMP-423COM-UTG20U-09	UTG20 premise horizontal cable, 4PR U/UTP, CMP, 23AWG solid conductors, slate jacket, 1,000 ft.	
2091B-UTGBLK-W1	CMP-423COM-UTG20U-02	UTG20 premise horizontal cable, 4PR U/UTP, CMP, 23AWG solid conductors, black jacket, 1,000 ft.	
<b>LSZH and Euroclass Jacket</b>			
	<b>LSZH Jacket</b>	<b>Euroclass Jacket</b>	
3091B-C-UTGWHT-W1	N/A	CCA-423COM-UTG20U-01	UTG20 premise horizontal cable, 4PR U/UTP, LSZH, CCA, 23AWG solid conductors, white jacket, 1,000 ft.
3091B-UTGBLU-W1	CMZ-423COM-UTG20-06	DCA-423COM-UTG20U-06	UTG20 premise horizontal cable, 4PR U/UTP, LSZH, DCA, 23AWG solid conductors, blue jacket, 1,000 ft.
3091B-UTGWHT-W1	CMZ-423COM-UTG20-01	DCA-423COM-UTG20U-01	UTG20 premise horizontal cable, 4PR U/UTP, LSZH, DCA, 23AWG solid conductors, white jacket, 1,000 ft.
3091B-UTGSLT-W1	CMZ-423COM-UTG20-09	DCA-423COM-UTG20U-09	UTG20 premise horizontal cable, 4PR U/UTP, LSZH, DCA, 23AWG solid conductors, slate jacket, 1,000 ft.
3091B-UTGBLK-W1	CMZ-423COM-UTG20-02	DCA-423COM-UTG20U-02	UTG20 premise horizontal cable, 4PR U/UTP, LSZH, DCA, 23AWG solid conductors, black jacket, 1,000 ft.

Note: Additional jacket colors and patch cord lengths available.

[FOR MORE DETAILS, VISIT ANIXTER.COM/UTG](https://www.anixter.com/UTG)