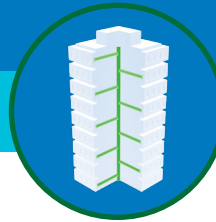


PRODUCT SOLUTIONS BRIEF
CORNING

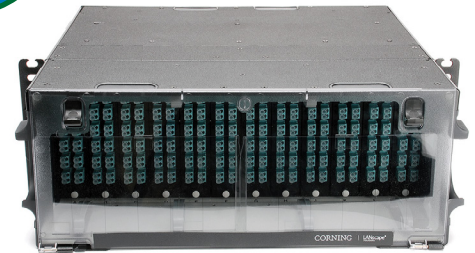
COMMERCIAL BUILDING NETWORK PERFORMANCE



Through our strong global partnerships and alliances with manufacturers such as Corning, we are able to present you with the following offering to meet your specific commercial building requirements.

Closet Connector Housing

Corning's Closet Connector Housings (CCH) provide interconnect or cross-connect capabilities between outside plant, riser or distribution cables and optoelectronics. Like other LANscape solutions hardware, the housings accept CCH connector panels, cassettes and modules. Every CCH housing is shipped complete with strain relief brackets, routing clips and guides, and mounting brackets for proper installation.



Corning's Closet Connector Housings (CCH) reduce the risk of error that can disrupt networks.

CHALLENGE SOLVERS

- From fiber and cable routing and strain relief to port labeling and termination, these housings reduce the risk of error that can disrupt networks.
- All Closet Connector Housings can also be upgraded for pigtail splicing to full fiber capacity and easy, modular fiber management through the use of CCH Splice Cassettes (CCH-CS).
- CCH cassettes are preloaded and prerouted for quick fusion splicing or either individual or ribbon fiber pigtails, which allows faster field splicing and easy modular management of connectorization within the housing.
- CCH accepts panels, modules and cassettes, which provides a variety of field-termination options.

THE ANIXTER APPROACH

- **Network flexibility**
Apply open-architecture designs to accommodate your performance requirements for a highly scalable network.
- **Application support**
Deploy scalable designs that can support multiple and varied applications over a high-performance, IP-based structured cabling system.
- **Universal cabling topology**
Determine the right choice for an open-architecture environment by adopting commercial building wiring and building automation standards.

THE CORNING SOLUTION

MOUNTING WIDTH	MOUNTING HEIGHT	CASSETTE TYPES
19 in. 23 in.	1U 2U 3U 4U	Pigtailed single-mode Pigtailed multimode Field termination Adapters

anixter.com/shopcorning

CORNING

WHAT WE HEAR

Challenges from the various commercial building stakeholders are:



Keeping up with **EVOLVING TECHNOLOGIES**



AMORTIZATION of cabling systems



Supporting multiple **APPLICATIONS**



Reducing network **DOWNTIME**



Coping with **INCREASING BANDWIDTH**

Infrastructure as a Platform
by Anixter

Infrastructure as a Platform by Anixter offers a standards-based, physical layer approach that provides a foundation to meet the high-performance demands of your commercial building.

CONFIGURE

We help you discover and map your specific needs to the best solution.

- Rack width
- Rack height
- Cassette types
- Security requirements

BUNDLE

Your validated, preconfigured solutions are packaged and site ready.

- Mounting accessories
- Hardware lock kit
- Jumper management
- Spare parts

DEPLOY

Controlled, repeatable solutions are delivered on time and under budget.

- Custom packaging and labeling
- Time-sensitive delivery options
- Staged project shipping
- Tailored last-mile delivery

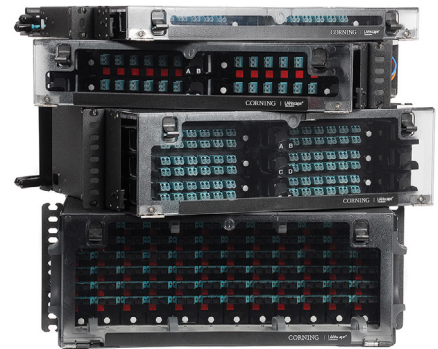
CORNING CCH FEATURES

✓ REDUCES NETWORK DOWNTIME

- Interconnect and cross-connect capability is ideal for field connectorization.
- Translucent top covers (1U, 2U, 3U) and rear cover (4U) are removable.
- CCH provides visibility and easy access for installation, testing and troubleshooting.
- Design supports flexibility for installation and moves, adds and changes (MACs).

✓ SUPPORTS MULTIPLE APPLICATIONS

- It accepts panels, modules and cassettes.
- It features a variety of field-termination options.
- It is adaptable to use as a modular splice housing.
- Splices are stored and protected in same footprint.



Corning's CCH hardware family stack

> FOR MORE DETAILS VISIT [ANIXTER.COM/SHOPCORNING](https://www.anixter.com/shopcorning)

About Anixter: [anixter.com/aboutus](https://www.anixter.com/aboutus)
Legal Statement: [anixter.com/legalstatement](https://www.anixter.com/legalstatement)

At Anixter, we enable the connected world. By building, connecting, protecting and powering valuable assets and critical infrastructures, we help to sustain and grow businesses and communities worldwide. We accomplish this by offering full-line solutions, technical intelligence, supply chain expertise and an unmatched global distribution network.

1.800.ANIXTER | [anixter.com](https://www.anixter.com)

