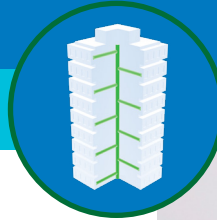


PRODUCT SOLUTIONS BRIEF
CORNING

COMMERCIAL BUILDING NETWORK PERFORMANCE

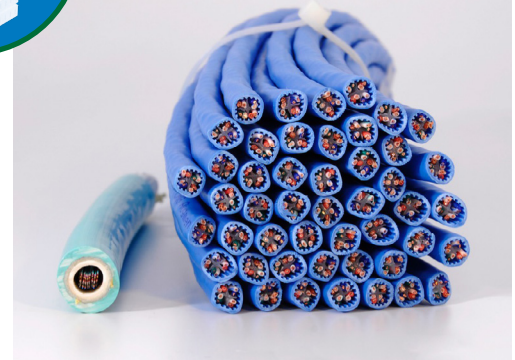


Through our strong global partnerships and alliances with manufacturers such as Corning, we are able to present you with the following offering to meet your specific commercial building requirements.

Corning® Optical Network Evolution (ONE™) Solutions

Corning's Optical Network Evolution (ONE™) is an infrastructure solution for both wired and wireless applications that will last the lifetime of your building. Corning helped enable the Internet explosion by inventing the world's first low-loss optical fiber, and our ability to stay ahead of network demands has been proven time and again.

Corning® ONE™ solutions provide fiber optic infrastructure to satisfy the application and bandwidth requirements in demand today, and tomorrow. Be it multi-family, commercial, retail, or mixed use, the real estate market requires connectivity to support the "live, work and play" lifestyle embraced by tenants and buyers.



Space saving fiber cabling (left)

CHALLENGE SOLVERS

- Commercial building tenants require mobility across properties and an untethered work environment
- An all-optical infrastructure provides unlimited bandwidth and extended reach to support multiple in-building applications including Wi-Fi, cellular and other IoT applications
- Convergence of applications in conduit and IT closets creates space savings and an easy to upgrade architecture
- Flexibility and pre-connectorized fiber solutions reduce installation and labor costs
- A future ready solution that meets tomorrow's bandwidth and connectivity needs

THE ANIXTER APPROACH

- **Network flexibility**
Apply open-architecture designs to accommodate your performance requirements for a highly scalable network.
- **Universal Cabling Topology**
Determine the right choice for an open-architecture environment by adopting commercial building wiring and building automation standards.
- **Wireless Mobility**
Determine your migration path for Wi-Fi and in-building cellular connectivity to support a multi-screen environment.
- **Media Selection**
Choose the appropriate physical media from twisted-pair, optical fiber and direct-attached cables to address high-speed bandwidth requirements.
- **Application Support**
Deploy scalable designs that can support multiple and varied applications over a high-performance, IP-based structured cabling system.

THE CORNING SOLUTION

FIBER CABLING

Composite plenum
Plenum optical
LC/APC

POWER SOLUTIONS

Interconnect unit
Power supply module
Digital Electricity™

ACTIVE ELECTRONICS

Headend unit
Optical interface unit
Remote access unit

anixter.com/shopcorning

CORNING

WHAT WE HEAR

Challenges from the various commercial building stakeholders are:



Keeping up with **EVOLVING TECHNOLOGIES**



AMORTIZATION of cabling systems



Supporting multiple **APPLICATIONS**



Reducing network **DOWNTIME**



Coping with **INCREASING BANDWIDTH**

Infrastructure as a Platform
by Anixter

Infrastructure as a Platform by Anixter provides a practical, configurable and integrated approach to supporting advanced mobility and communications in your commercial building.

CONFIGURE

We help you discover and map your specific needs to the best solution.

- Active electronics
- Cabling requirements
- Fiber housing type
- Accessories

BUNDLE

Your validated, preconfigured solutions are packaged and site ready.

- Racks and cabinets
- EDGE™ HD
- Network test equipment
- Cabinet PDUs

DEPLOY

Controlled, repeatable solutions are delivered on time and under budget.

- Custom packaging and labeling
- Time-sensitive delivery options
- Staged project shipping
- Tailored last-mile delivery

CORNING® OPTICAL NETWORK EVOLUTION (ONE™) SOLUTIONS FEATURES

✓ LOWER TOTAL COST OF OWNERSHIP (TCO)

- Wire it once for lifetime of investment
- Reduces operating expenses through lower power and space costs
- 4th Utility for enhancement of asset value

✓ ENABLES UNTETHERED WORK ENVIRONMENT

- Convergence of applications for seamless connectivity
- Fiber-to-the-edge allows for virtually unlimited bandwidth and enables network offload



IDF Configuration with Interconnect Unit (ICU)

➤ **FOR MORE DETAILS VISIT ANIXTER.COM/SHOPCORNING**

About Anixter: anixter.com/aboutus

Legal Statement: anixter.com/legalstatement

At Anixter, we enable the connected world. By building, connecting, protecting and powering valuable assets and critical infrastructures, we help to sustain and grow businesses and communities worldwide. We accomplish this by offering full-line solutions, technical intelligence, supply chain expertise and an unmatched global distribution network.

1.800.ANIXTER | anixter.com

