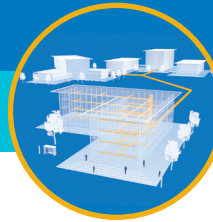


PRODUCT SOLUTIONS BRIEF  
**PANDUIT**

**HIGHER EDUCATION NETWORK PERFORMANCE**



Through our strong global partnerships and alliances with manufacturers like Panduit, we are able to present you with the following offering to meet your specific campus facility requirements.

**45° Angled Wire Caps for Mini-Com® UTP Jack Modules**

45° angled wire caps are used with Panduit Mini-Com UTP jack modules to provide improved cable routing to jacks in confined spaces such as office furniture, raceway, and wall outlets with conduit. Because the wire exits the cap at an angle, rather than straight, it provides improved bend radius in confined spaces.

The angled wire caps terminate 4-pair UTP cable, using Panduit's familiar TG-style termination that optimizes performance by maintaining cable pair geometry while eliminating conductor untwist. Color coded wire caps designate performance category and are labeled for T568B wiring schemes.



The 45° angled wire cap allows cable to route up or down, or to the left or right, improving bend radius in confined spaces.

**CHALLENGE SOLVERS**

- Reversible direction allows the same cap to be inserted in two different directions, either an up/down or left/right configuration, limiting the number of parts that need to be ordered and kept on hand.
- Angled cable exit helps maintain proper bend radius, especially with bulky Category 6A cabling routed in tight spaces.
- Wire caps are compatible with Panduit's most common Mini-Com UTP jacks, so you can use the jacks you already have and are used to.
- Termination design matches Mini-Com TG-style jacks for optimal performance, a minimal learning curve and fast field terminations.

**THE ANIXTER APPROACH**

- **Network Flexibility**  
Apply open-architecture designs to accommodate your performance requirements for a highly scalable network.
- **Media Selection**  
Choose the appropriate physical media from twisted-pair and optical fiber to support both wireless and wired connectivity.
- **Cabling Topology**  
Select an application-independent cabling architecture to support inter- and intra-building network connectivity.
- **Wireless Mobility**  
Determine your migration path for wireless connectivity to support a device-dependent and multiscreen environment.
- **Application Support**  
Deploy scalable designs that can support multiple and varied applications over wired and wireless connectivity solutions.

**THE PANDUIT SOLUTION**

PERFORMANCE	ROUTING DEPTH	UL RATING
Exceeds channel and component requirements for each performance level	55% reduction in cable routing depth Maintains proper bend radius	UL 1863 UL 2043

[anixter.com/shoppanduit](http://anixter.com/shoppanduit)



**WHAT WE HEAR**

Challenges from the various higher education stakeholders are:



**MANAGING DATA**  
and governance



Meeting **WIRELESS CONNECTIVITY** expectations



Supporting new **LEARNING MODELS**



Leveraging **ANALYTICS** to improve performance



Coping with **INCREASING BANDWIDTH**

**Infrastructure as a Platform**  
by Anixter

Infrastructure as a Platform by Anixter offers a standards-based, physical layer approach that provides a foundation to meet the high-performance networking demands of your campus environment.

## CONFIGURE

We help you discover and map your specific needs to the best solution.

- Termination direction (up/down or left/right)
- Performance (6A, 6, 5e)
- Packaging (10 or 100 pieces)

## BUNDLE

Your validated, preconfigured solutions are packaged and site ready.

- Mini-Com jack modules
- Tools
- Cable

## DEPLOY

Controlled, repeatable solutions are delivered on time and under budget.

- Custom packaging and labeling
- Time-sensitive delivery options
- Staged project shipping
- Tailored last-mile delivery

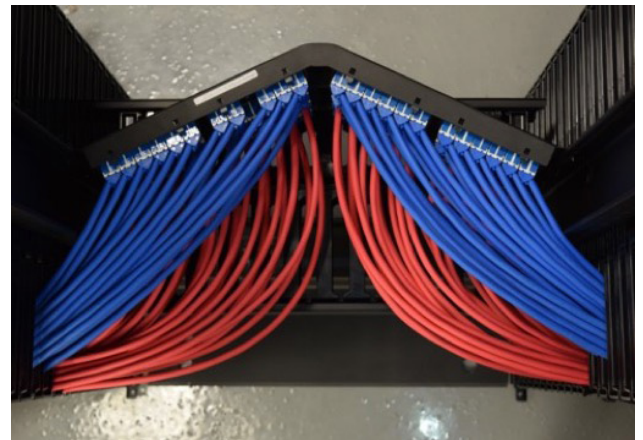
### 45° ANGLED WIRE CAPS FOR MINI-COM® UTP JACK MODULES FEATURES

#### ✓ CATEGORY 6A CABLE MANAGEMENT

- Angled termination directs bulky Cat 6A cable for improved bend radius
- Effective in office furniture, raceway, conduit and rear of patch panel
- Reduces space needed behind wall plate by 40%
- Left/right termination on the back of a patch panel reduces cable bulk and improves installation and maintenance

#### ✓ EASY INSTALLATION

- Works with Panduit's most common TG-style jack, for familiar termination style
- Termination tool is lightweight, foldable and easy to carry
- Can be installed on new jacks or already installed jacks to gain routing advantages without buying new jacks



Left/right terminations on the back side of an angled patch panel help direct cabling to the sides of the rack and help manage cable bulk.

**> FOR MORE DETAILS VISIT [ANIXTER.COM/SHOPPANDUIT](https://anixter.com/shoppanduit)**

**About Anixter:** [anixter.com/aboutus](https://anixter.com/aboutus)

**Legal Statement:** [anixter.com/legalstatement](https://anixter.com/legalstatement)

At Anixter, we enable the connected world. By building, connecting, protecting and powering valuable assets and critical infrastructures, we help to sustain and grow businesses and communities worldwide. We accomplish this by offering full-line solutions, technical intelligence, supply chain expertise and an unmatched global distribution network.

1.800.ANIXTER | [anixter.com](https://anixter.com)



17T8288NA © 2017 Anixter Inc.

**Products. Technology. Services. Delivered Globally.**